

## HYBRID FLOORING - EASI-PLANK HERRINGBONE PARQUETRY ANGLE / ANGLE CLICK Floating Installation Guidelines

### General

Please read the following instructions thoroughly before installing the floor.

This document covers our **EASI-PLANK HERRINGBONE PARQUETRY** range that features an **Angle / Angle click together profile for floating installation only**. As with all flooring products careful attention to the installation and basic floor care guidelines need to be understood and followed to maximise the performance benefits of the product. **An expanded Hybrid floor care document is available on our website for easy reading or downloading.**

**Hybrid floors are considered interior waterproof however that does not mean they can be installed as a substitute for a moisture barrier.** Prolonged exposure to concrete vapour and moisture from below or above the surface can damage the flooring regardless of its waterproof attributes. Subfloor preparation and installation suitability must be determined to support warranty provisions. **For claim inspections we will request test details of the installation method, therefore a simple photographic file will make this process much easier should any future claim arise.**

**Note: for use in wet areas,** check with local Building Code requirements to confirm suitability for installation in **bathrooms, laundry & powder rooms**. In some jurisdictions local Building Authorities will not certify floating installations in wet areas, it's vital you confirm prior to install, **do not assume the retailer or contractor has checked for compliance.**

**Hybrid flooring is considered waterproof for indoor use only, it should not be installed in pool areas, saunas, conservatories, or exposed sunrooms where heat and high UV exposure may reach extremes.** Hybrid Parquetry should be installed by a professional flooring contractor or skilled tradesperson; it is not a simple DIY project. The installation process and method selected is the responsibility of the contractor/owner. You must be satisfied that the contractor is qualified to conduct your site installation. If you have any concerns please contact your reseller.

The installation should be conducted with due care, please avoid any overuse of tapping blocks or mallet hammering to the end & side joint locking system: excessive handling will damage the joint locking system; this will not be covered by warranty. **Hybrid installations require more sensitive tapping around the end & side joints compared to Laminate products and should be handled with care when the locking system is being engaged.**

### Set up planning.



**Be Smart, work safely - Hearing Protection, Safety Glasses, N95 Dust Mask,** Tape Measure, Guillotine, Jigsaw or fine-tooth Power Saw, Utility Knife, Straight Edge, **Tapping Block, Rubber Mallet,** Pull Bar, 8 -10mm Spacers, T-Square, Broom / Vacuum and a Hand Roller to smooth edge joints if necessary. **200µm Builders Polythene Film.**

**The use of 200µm Builders Polythene Film is required over all sub-floors prior to installation,** please read installation and floor care notes prior to commencement.

**EASI-PLANK HERRINGBONE FLOATING INSTALLATION - ANGLE / ANGLE CLICK LOCKING PROFILE**

**Maximum Raft Size: EASI-PLANK Herringbone Parquetry, - 10m, length & 10m, width.**

**Initial considerations:**

- **The floor should be installed in accordance with AS/NZS 1884-2021 – Resilient sheets and tiles – Installation Practices.** Failure to follow these guidelines covering sub-floor preparation and installation will void the warranty. Please familiarise yourself with these important considerations.
- Thorough planning prior to installation will assist in determining requirements for room to room and perimeter expansion in-line with the **raft size noted above**. Trim placement & colour options should be confirmed prior installation. Scotia is available if required. **Always check that the floor product & colour is as specified.**
- **At site, store cartons placed on a flat, dry area away from extreme temperatures or moisture.**

**During & post installation avoid direct exposure to sunlight and heat for prolonged periods, discoloration & plank deformity may occur.** During peak sunlight hours you must use sun blinds, tinting or similar window & door protection, this will minimise the UV bleaching & heat damage that can occur if left unprotected. To minimise shade and batch variation, mix and install planks from several cartons during the install process.

- **Inspect all planks for damage before installing. If you have any concerns about the product fit or finish, please contact your reseller immediately. DO NOT INSTALL DEFECTIVE PLANKS.** Claims will not be accepted for flooring that has been cut to size and or installed.
- Subfloor patching/levelling must be completely dry prior to installation, **refer manufacturers guidelines.**
- This product is designed as a floating installation only, it must be installed on a structurally sound, flat & dry substrate, **raft size & overall installation requirements must be followed to comply with warranty provisions.**

**Fixed cabinetry & Heavy objects should not be placed on top of a floating installation.** Kitchen island benches will require the floor to be cut in and around the cabinetry to avoid restricting the normal movement associated with floating installations. Heavy items such as a billiard table or filling cabinets will restrict floor movement, do not place heavy fixed items over a floating floor installation.

**Suitability over Sub-Floor Heating & close proximity to heat sources.**

Our Hybrid flooring products are suitable for installation with Hydronic In-Slab under-floor heating systems. The system must be installed and operated as per the heating system manufacturer's installation and operating guidelines. No other floor heating system or method will be covered by our warranty. **Hydronic 'In-Screed' heating is not covered by our warranty.** Above floor heating & cooling systems require strict attention to operating guidelines when used with Hybrid Flooring.

**Do not install a Hybrid floor in close proximity to heat exposure from open fires or enclosed heating units. This will result in plank deformity, unrepairable damage and void your warranty.**

## **EASI-PLANK HERRINGBONE FLOATING INSTALLATION - ANGLE / ANGLE CLICK LOCKING PROFILE**

**Maximum Raft Size: EASI-PLANK Herringbone Parquetry, - 10m, length & 10m, width.**

### **Preparation of sub-floor.**

All subfloors must be clean, flat, & structurally sound (no squeaks or movement), level - 3mm over 3.0m radius. Nails & screws below surface and grout lines need to be sound, and not > 2 mm below tile surface. Sub-floor preparation and inspection is a crucial part of a successful installation.

### **Single Residential Installations.**

Easi-Plank Herringbone Parquetry has an attached acoustic underlay, the use of an additional underlayment is not necessary for detached residential housing and should not be used under any circumstance.

The attached underlay does not contain a PE moisture barrier film therefore you must cover all types of sub-floors with 200µm Builders Polythene Film prior to installation. The polythene film barrier assists in reducing slab curing vapour & moisture transmission from below the surface and reduces friction when movement occurs. Seasonal movement will occur depending on the temperature & humidity levels within the interior environment. Tape all joins to retard vapour & moisture ingress from below the surface.

### **Mutli-Residential Installations.**

Due to existing building design or Body Corporate requirements multi-residential installations may require additional sound dampening to meet strict Occupancy or Body Corporate requirements.

If the acoustic performance of Easi-Plank does not satisfy the buildings requirements additional sound dampening maybe required to meet building code or body corporate specifications. In these circumstances a rigid (dense) acoustic matting can be used in addition to the attached acoustic pad to meet a specified acoustic outcome.

Typically, a rigid Rubber or Cork / Rubber acoustic matting between, 1.5mm > 3mm is suitable in these circumstances. Check with your supplier or acoustic specialist for an appropriate product and installation guidelines. An additional layer of soft cell or expanded foam underlay cannot be used as it will void the warranty. These types of underlays are not designed to support the locking system that have an attached acoustic pad.

## **INSTALLATION OVER – TIMBER STRIP / WOOD PANEL SUB - FLOORS**

**CAUTION:** Some types of fixings, such as common steel nails and certain solvent-based construction adhesives may cause discoloration transferring through the Easi-Plank Hybrid flooring, avoid these materials as product surface discoloration will not be covered by the product warranty. **Note:** Product odours may be present when cartons are initially opened, please install in a well-ventilated area & the use of protective eye & dust/odour mitigation masks are necessary throughout the installation process, be smart work safely.

1. **Subfloor wood-based types- existing Timber Strip Flooring, Plywood, OSB, Particleboard (PB), and Masonite. Substrate must be** structurally sound and secure (no movement). Screw fix any loose or squeaking planks or panels and make sure the floor is level and dry (less than 14% MC for timber or wood-based panels). **Squeaky or noisy sub-floors will remain the same if structural issues are not addressed, a new Hybrid floor will not reduce faults or noise from a problematic subfloor.**

**INSTALLATION OVER – TIMBER STRIP / WOOD PANEL SUBFLOORS continued:**

2. All wood-based floor surfaces shall be smooth, permanently dry, clean, and free of all foreign matter such as dust, wax, solvents, paint, grease, oils, and old adhesive residue. The surface must be rigid, secure, and free of flaking or powdery substances. Sand all surfaces and edges on wood-based panels such as plywood or particleboard. Level floor, if necessary, 3mm over a 3m radius. **Use approx. 5mm Masonite or similar rigid floor panels over timber strip floors if a level surface cannot be achieved.**
3. If needed add additional fixings to adequately secure an existing substrate. Where possible, examine sub-floor to check underfloor conditions for high moisture or structural defects. For new substrate material fasten and secure according to panel manufacturing guidelines or meet local building regulations. Lightly sand all timber surface areas and importantly joints on particleboard flooring.
4. **Important requirement for Timber Strip, Particle Board (PB) & OSB sub-floors.** Cover with 200µm builder's polythene film over entire surface. Securely tape all joints. This method is to reduce friction & jamming making sure the acoustic underlay does not adhere or get jammed to the sub-floor if building movement occurs it also retards vapour and moisture ingress from below the surface.
5. **Do not use additional underlay** for single residential installations it will compromise the click system and void the warranty. **Refer pg. 3 Underlayment & Acoustic installs Multi-Res & Commercial.**

**INSTALLATION OVER – CONCRETE SLAB SUBFLOORS**

6. **For concrete slab installations.** The slab must be dry & level, (3mm over a 3m radius) approx. moisture level target 2.5 – 4.5% in a 24-hr. period. The use of an Impedance meter for determining slab Relative Humidity is generally considered the easiest way to provide random measurements. Check slab perimeters, doorways, and areas such as garage entry to interior and patio openings. This will quickly assist in determining suitability for installation. As a guide ASTM F2170 test method is recommended.
7. Do not install over concrete sub-floors with a history of high moisture conditions. Ph level of concrete should be between 5-9. **The final responsibility for determining if the concrete is dry for installation remains with the floor installer. Keep site data records & photographs to support warranty provisions.**
8. **Cover slab with 200µm builder's polythene film over the entire surface. Securely tape all joints.** This method will reduce friction & jamming making sure the acoustic underlay does not get jammed to the sub-floor if building movement occurs, it also retards slab vapour & moisture ingress from below the surface.

**Radiant Heat: the warranty covers Hydronic In-slab only** - Radiant heat components must have a minimum of 12mm separation from the product. This is the only type of radiant heat system that is approved. Radiant heat system must be on and operational for **at least 2 weeks prior to installation** to reduce residual moisture within the concrete. **Three days prior** to installation lower the temperature to 19°C. After installation gradually increase the temperature in increments of 1°C to avoid overheating. Maximum operating temperature should never exceed **27°C**. Use of an in-floor temperature sensor is recommended to avoid overheating. **Follow all install & operating guidelines.**

**In-Screed Heating or Electric Heat Blankets etc. are not covered by our warranty.**

## INSTALLATION OVER OTHER EXISTING FLOOR COVERINGS

- Hybrid flooring can be installed over most existing hard surface floor coverings provided that the existing floor surface is structurally sound, clean, flat, and dry. **No loose grout, tiles, or planks. Tile Grout maximum depth <2 mm below tile surface. Remember a poor condition subfloor = a poor outcome if not repaired.**
- **Do not install over Loose Lay, Pressure Sensitive (PS) Adhesive fixed Vinyl, or cushioned Vinyl. Hybrid floors can be installed over permanently fixed (Hard-Set) Vinyl sheet or plank floors. Existing Vinyl should not exceed more than 1 layer.** To check existing Vinyl flooring simply try to peel or pick up the existing vinyl floor, if it lifts then it is not suitable for installation, it will need removal. Soft underlayment and loose substrates will compromise the locking ability. **Do not install Hybrid flooring over any type of carpet.**
- Do not install over sub-floors with a history of high moisture conditions. **Moisture Content (MC) of concrete slab should be approx. 2.5 – 4.5% & Timber max. 14%. Remember, it's the installers responsibility to keep relevant subfloor moisture records (photographs) for site related conditions. It's simple, keep job records!**

## HERRINGBONE ANGLE / ANGLE CLICK FLOATING INSTALLATION METHOD

- **Hybrid plank flooring is designed to be installed using the floating method.** Never permanently secure the planks to the subfloor when using the floating installation method. **Do not install heavy cabinets, kitchen island benches or fixed heavy objects on top of the flooring.**
- **8 - 10mm expansion space is required for perimeters on general installations. Larger installs over a Raft size of 10m width & 10m length will require additional expansion capacity to cater for the room layout.** You must allow for room-to-room transmission trims and longitudinal transmission joins to cater for the normal creep and racking that occurs within the overall building structure.
- **Extra expansion capacity is required for long hallway installs >10m, especially when they run into open floor spaces (living rooms & kitchen). Always consider transmission breaks to improve the performance of the install. Location planning of trims is vital and should be discussed with the owner prior to installation.**
- An extensive range of colour matched trims and scotia are available to make the floor installation as seamless as possible. Expansion & room to room transition breaks are necessary and help the floor perform as intended. **Floating floors are designed to have expansion & transition trims, leave them out and you will void the warranty.**
- For existing dwellings if you intend to keep the original skirting you can undercut the skirting & door jambs to cater for expansion provisions, alternately Scotia can be fastened to the existing skirting. Do not fasten skirting, scotia and or transition strips to the planks. **The floor must be able to move without restrictions.**

**Do not fill expansion provisions with caulking compounds this will restrict movement and impact the floor's natural movement.** Some minor use of caulking is acceptable for certain aesthetic circumstances around ducting pipes etc. **At a minimum, a 6mm expansion gap is required around waterfall bench tops and where the flooring has been cut in and around kitchen island benches.** Use a foam backing rod to fill the expansion space and caulk the surface area to create an aesthetically clean finish.

**STEPS TO COMMENCE ASSEMBLY:**

The Herringbone Hybrid floor is supplied as **A & B parquetry planks**.

- Plan the direction the planks will run & establish your room layout starting point.
- Commence with an **A plank on your left** and a **B plank on your right**, at a 90° angle from each other with the grooves facing away from you. Insert the tongue of the long side of the **A plank into the groove of the short side of the B plank at a 45° angle**, ensure that the edges of the planks are aligned and flush. Refer **Image 1**.
- Be sure to use a tapping block & rubber mallet. Do not hammer planks edges directly as you will damage the click system. Ensure all planks are securely clicked together and lay perfectly flat on the subfloor.
- Continue this process until you have two (2) **A planks** and three (3) **B planks** as per **Image 2**.



Image 1.



Image 2.

- Use a straight edge to mark a line that joins the two marked spots as per **Image 3** below. Cut along this section to create a triangle assembly.

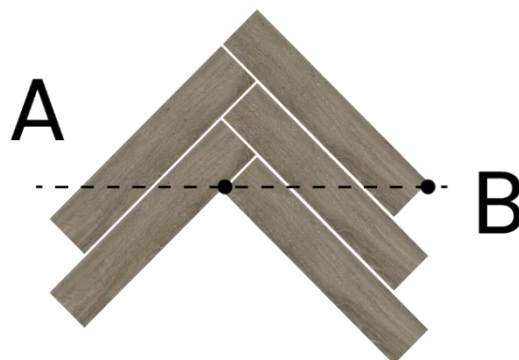


Image 3.

- After cutting this triangle section place it against the wall making sure to leave **8 - 10mm expansion gap** between the planks and the wall perimeter. Use gap spacers for consistency.
- Continue this process and create enough triangles to cover the length of the wall.

**STEPS TO ASSEMBLY CONTINUED:**

- Insert an **A plank** into a **B plank** to connect two triangles. Using a mallet and a tapping block, ensure that the tongue and groove are securely clicked together.
- Continue the process with all triangles, installing all **A planks of the first row, refer Image 4.**

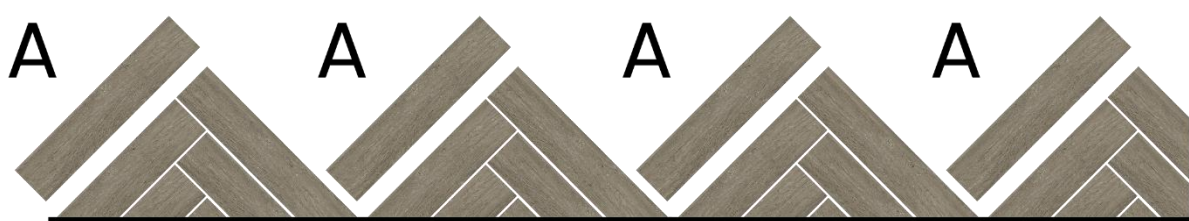


Image 4.

- Continue the same process with all **B planks**, inserting them into the **A planks**.
- Continue the process until you reach the other wall. As you install review click engagement to ensure the parquetry planks are securely locked together. You may choose to use a hand roller or soft tapping to make sure the surface is flat.
- When fitting under door skirtings, if necessary, a flat pull bar may be used to assist in locking the planks.
- When fitting around obstacles or into irregular spaces, planks can be cut easily and cleanly using a jigsaw with a sharp blade or hole saw. It is often beneficial to make a cardboard template of the area and transfer this pattern to the triangle or individual piece.
- **In certain locations you will need to adhesive fix the small pieces where the click profile is unable to be secured in the joint as intended.** Apply a bead of industrial strength Super Glue (Ethyl Cyanoacrylate) Sika Bond F-100 or similar adhesive to the groove of the small section and secure in place with low tack blue tape.
- Protect all exposed flooring edges by installing wall skirting, scotia and or trims. Do not secure to the parquetry floor. A slight gap should exist between the floor height and any skirting or scotia.
- Protect the installed flooring from on-going construction and direct exposure to harmful UV heat and light. This will reduce the incidence of fading and surface damage whilst construction continues.

**Tip for angle / angle assembly:** this is best done with a low angle of the plank and maintain pressure into the side seam as you rotate the plank to the subfloor. A small amount of pressure is required to seat the tongue into the groove. You should feel the tongue lock into the groove. **Do not excessively hammer (mallet) end joints as this may result in micro-fractures and end joint failure in-service.**

## STAIR NOSING INSTALLATION

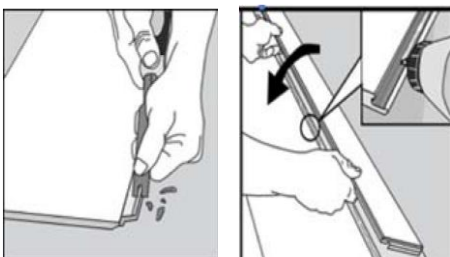
**The product cannot be floated for stair applications.** For this application you will be using a matching colour plank from our Easi-Plank range and a manufactured stair nosing. The stair nosing will not have any acoustic pad attached however if you are using a wide plank for the tread you will need to remove the acoustic pad from the plank, simply peel off the acoustic pad from the underside. Clean away any loose debris & residual adhesive. Stair nosing & tread surfaces need to be permanently adhesive fixed (full trowel method) to comply with building code requirements.

**Use a silicone-based hard flooring adhesive to the underside of the cut planks or nosing to provide a secure and lasting application. Remember, you must remove the acoustic pad before bonding to the stair substrate. During the curing phase, weighting and taping the stair components will be necessary to maximise the bond quality.**

**Method and workmanship are not covered by our product warranty.**

## REPAIRS IF REQUIRED

1. Easi-Plank hybrid flooring is tough and durable; however, if a plank becomes damaged it can be replaced. If the plank is damaged along the perimeter of the room, the easiest technique is to disconnect the planks until the damaged plank is removed. Replace the plank and reassemble. If it is impractical to disconnect and reassemble the flooring, the following procedure should be followed:
2. It is recommended to use painters' blue tape along the sides of the board to be replaced to prevent damage to the adjoining boards.
3. Using a chisel or utility knife cut through the middle of the damaged plank, running the length of the plank.
4. Carefully remove cut pieces from the insert, you can use a utility knife or chisel to remove the pieces from the floor. Clean up any debris so the new plank can sit flush with the existing floor.
5. To prepare replacement plank. Cut and remove tongue from the long side and the short end of the plank. This can be accomplished by using a sharp chisel or utility knife.
6. Using a jigsaw / drop saw or utility knife, remove approximately 35 mm of the groove on the long side of the plank from the tongue end.
7. Apply a small bead of industrial strength Super Glue (Ethyl Cyanoacrylate) Sika Bond F-100 or similar adhesive to the groove of the planks on the floor, (do not use generic super glues).



**8.** Insert replacement plank, locking the long side joint (groove side) into the existing floor. NOTE: The tongue end of the replacement plank will overlap the existing floor prior to being fully inserted.

**9.** Use a scrap piece of plank as a tapping device, tap the groove end into place. Insert the blade of a utility knife on the opposite side to lift and adjust the end as it is being tapped into place. Weight/Tape the plank until the adhesive cures, approx. 6 – 8 hours.



## Floor Care & Maintenance

Your new floor will require care and maintenance to keep it looking good and performing as intended. If you follow these simple cleaning and maintenance guidelines the floor will provide many years of great service. An expanded Hybrid floor care document is available on our website for easy reading or downloading.

- **Steam mopping should not be used under any circumstances. Sweep or a damp mop for cleaning is ok.**
- Please ensure that an ideal room-climate is maintained whenever possible. Ideal conditions would provide for approximately, 45-60% Air Humidity and 21-25°C room temperatures. This is a comfortable range for indoor climate and provides for optimal health and assists in the overall performance of the floor. Ensure air-conditioning or evaporative cooling systems are operated in accordance with the manufacturer's instructions to avoid excessive cooling, heating and moisture ingress remaining within the internal space.
- Daily cleaning should be done with a vacuum cleaner, static mop, or a smooth floor-broom. Any sand or dirt should be removed promptly: they are abrasive and will cause scratches and damage the floor surface coating over time. Please check vacuum head, broom, and other cleaning devices to make sure metal screws or sharp edges do not exist, they will damage the surface. **Do not use Steam Mops or wet mopping to clean.**
- The floor surface can be cleaned with a well-rung damp-dry mop. Do not use conventional household cleaning solutions and detergents, they are abrasive and will damage surface coating. Do not use traditional wax or steel-wool, PH neutral cleaning solutions are required, please observe, and follow manufacturer's instructions. **Bona Floor Care products for Vinyl surfaces are a worthwhile investment.**
- **Do not use solvents or citrus based cleaning solutions to remove or clean residue or marks on the surface.**

As with all flooring products your new Hybrid floor can be affected by excessive natural and artificial UV light. Your floor may change colour when exposed to excessive UV conditions for long durations. Floor coverings such as rugs and mats should not be placed immediately after laying.

The floor should be allowed to stabilise for up to 8 weeks before rugs and mats are positioned.

Shifting and alternating rugs over time is also a good idea.

**Window and large door openings require UV protection with sun blinds, drapes or similar. Window & door treatments should be in place prior to or immediately after occupancy. Temporary covers are required during the installation phase.**

- It is important that you affix felt strips or suitable protection under any furniture-bases, chair-legs, and commonly movable objects. At entry points and for high traffic areas the use of floor mats to remove entry grit and dirt is recommended. **Do not drag or push heavy items across the surface of the floor.**
- **Roller or castor chairs should not be used directly on the floor surface as grit will build up under the wheels and become abrasive.** Protective mats must be placed on the floor to protect the surface from excessive wear and indentations.